



## Methodology for 'Terrestrial Biodiversity' map V2

Date: 21/05/2021

Rep: Kirsty Raines

Total Earth Care Pty Ltd

ABN: 14 043 484 77

Address: 5/1 Vuko Place, Warriewood, NSW 2102

Phone: (02) 9913 1432

Email: consulting@totalearthcare.com.au

To	Care of	Site Name and Location
Georges River Council	<b>Anne Qin</b> Strategic Planner/Urban Designer 02 9330 6266 aqin@georgesriver.nsw.gov.au	Biodiversity Study for Georges River LGA

Dear Anne,

This memorandum briefly outlines the methodology undertaken to prepare the 'Terrestrial Biodiversity' map (V2) (the map) to support the Georges River LEP/ DCP 2021. The updates on the V2 map relate to the addition of a buffer area.

## 1 Methodology

### 1.1 Overview

The Terrestrial Biodiversity map aims to preserve and protect areas of moderate and high biodiversity value across the LGA. Areas in the Terrestrial Biodiversity layer comprise various features including areas of known threatened species, Threatened Ecological Communities and existing native vegetation.

### 1.2 Approach

Table 1 outlines the input data utilised to develop the map.

**Table 1. Input layers/ sources**

Source	Layer	Usage
<b>SydneyMetroArea_v3</b>	SydneyMetroArea_v3_1_2016_E_4489	Used directly, however amended as described in Section 1.2 (below).
<b>Biodiversity Study</b>	Moore Reserve vegetation amended	Used directly.
<b>National Parks and Wildlife Service / Six Maps</b>	NPWS_Reserve	Used directly.

The existing vegetation mapping layer "SydneyMetroArea\_v3\_1\_2016\_E\_4489" was adapted to remove all non-native vegetation communities, including:

- Weeds and exotics
- Urban native/exotics
- Artificial wetlands
- Plantation
- Rock
- Seagrass meadows (due to not being terrestrial).

### 1.2.1 Changes in V2

The following changes has been made since V1:

- The notable and important habitat corridors and buffer areas of threatened vegetation comprising of other non-native vegetation types were removed as a separate 'Green Corridors' layer was developed and a specific buffer area was added.
- A standardised buffer has been applied to the whole Terrestrial Biodiversity layer. This has been set at 40m to provide a sufficient buffer for the protection of the sensitive biodiversity features. The buffer would:
  - Avoid the incursion of exotic and weed species from adjacent areas
  - Minimise the deposition of exotic and weed species material (i.e. seeds) via wind and water transportation
  - Minimise changes to localised hydrology
  - Support the resilience of the sensitive biodiversity features
  - Encourage the extension of native plant communities in adjacent areas
  - Minimise risk of erosion and pollution entering from adjacent areas.
  - Minimise noise, vibration and light spill from adjacent areas.

The updated maps are provided in Attachment 1. A comparison of the changes between V1 and V2 are provided in Attachment 2.

Please contact me for any further information.

Kind Regards,



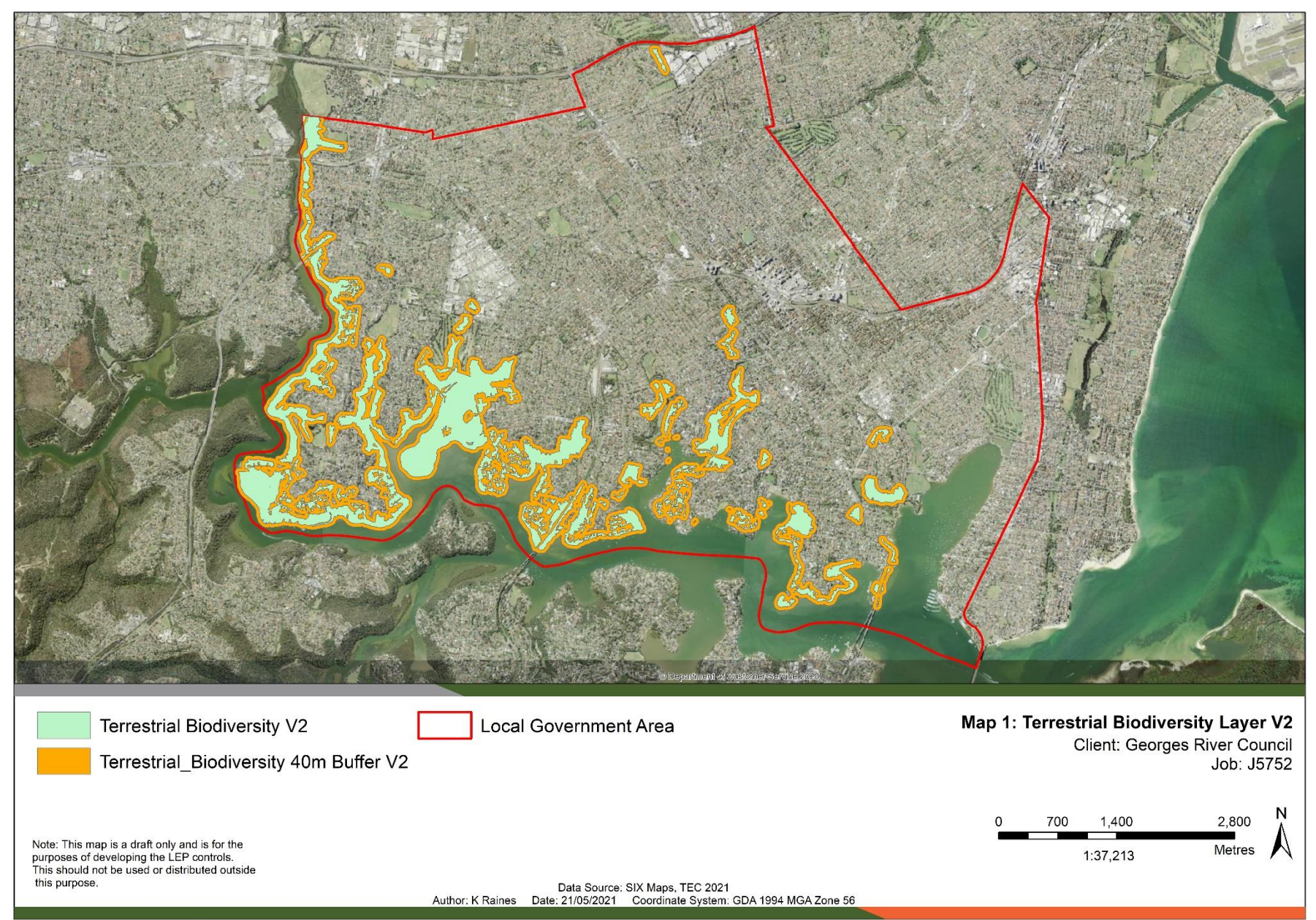
Kirsty Raines | Ecologist

Total Earth Care Pty. Ltd. | [www.totalearthcare.com.au](http://www.totalearthcare.com.au)

Unit 5, 1 Vuko Place Warriewood, NSW, 2102

T: (02) 9913 1432 | F: (02) 9913 1434 | E: [kraines@totalearthcare.com.au](mailto:kraines@totalearthcare.com.au)

Attachment 1 – ‘Terrestrial Biodiversity’ map V2





Attachment 2 – Comparison between ‘Terrestrial Biodiversity’ map V1 and V2

